

## Wright CONSERVE® Total Hip System Defect

### The Facts

#### Defective Device:

Wright CONSERVE® Total Hip System  
Wright PROFEMUR® Total Hip System

#### Dates of Implant:

2004 to present

#### Design Defect:

The shallow nature of the Wright Conserve cup is similar to the recalled DePuy® ASR metal-on-metal (“MOM”) devices which:

- 1) Causes excessive heat and friction between the metal cup and the metal ball resulting in excess metal wear debris;
- 2) The design at issue here increases friction at multiple contact points between the femoral head and the acetabular cup. Thus, large amounts of wear debris resulting in metal toxicity;
- 3) Causes increased metal ions in the body, specifically, cobalt and chromium.

Constant friction between the metal acetabular cup and the metal femoral head result in the release of miniscule metal particles into surrounding soft tissue and bloodstream. The elevated metal (cobalt and chromium) ions result in the metal toxicity that may result in a multitude of health problems such as cysts, necrosis, rash, cardiac problems, among other adverse reactions.



CONSERVE® TOTAL  
BFH® Head



CONSERVE®  
6mm Shell  
and 10mm Shell



CONSERVE®  
Spiked Shell



CONSERVE®  
6mm HA Shell



CONSERVE®  
SUPERFIX™ Shell



PROFEMUR® Modular Neck  
Technology

## Problems with Wright Implants: Loosening, Metallosis & Fracture

### A) Common Symptoms and Difficulties Associated with Loosening

- Difficulty standing or walking
- Crunching or popping noises
- Hip fractures or dislocation
- Tissue inflammation, infection, necrosis (this can cause the need for additional surgeries within a couple of months after implant)
- Severe Pain



**PMKM&N**

POPE, MCGLAMRY, KILPATRICK, MORRISON & NORWOOD, LLP  
A LIMITED LIABILITY PARTNERSHIP INCLUDING A PROFESSIONAL CORPORATION  
ATTORNEYS AT LAW

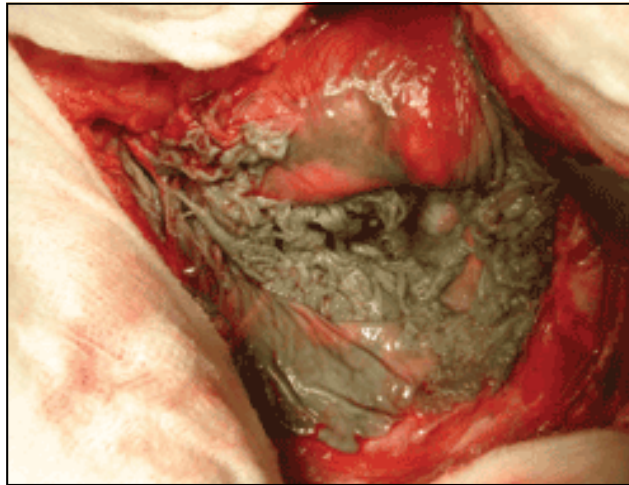
Michael L. McGlamry, Esq.  
mmcglamry@pmkm.com  
404-523-7706

N. Kirkland Pope, Esq.  
kirkpope@pmkm.com  
404-523-7706

[www.pmkm.com](http://www.pmkm.com)

## B) Common Symptoms and Difficulties Caused by Metallosis

Metallosis is a common problem caused by metallic particles being released into surrounding tissue and into the bloodstream. The excessive heat and friction between the metal cup and the metal ball creates these metallic particles. The friction results in ions of chromium and cobalt being released into the body. As a result, patients are experiencing Aseptic Lymphocytic Vasculitis Associated Lesions (“ALVAL”) from heavy metal toxicity.



Symptoms of Metallosis:	Metallosis Results in Long-Term Injuries such as:
<ul style="list-style-type: none"> <li>• Swelling in and around Implant Site</li> <li>• Spontaneous Dislocation</li> <li>• Nerve Palsy</li> <li>• Noticeable Mass or Rash</li> <li>• Groin Pain / Thigh Pain</li> <li>• Fatigue</li> <li>• Intense Pain at the Site of the Hip Replacement</li> </ul>	<ul style="list-style-type: none"> <li>• Metal staining, black tissue and pseudo tumors around prosthesis.</li> <li>• Bone deterioration (and progressive bone deterioration)</li> <li>• Site area tissue and / or muscle necrosis</li> <li>• Brownish Fluid Developing in Both Hips</li> <li>• Other Infections</li> <li>• Potentially cancerous</li> </ul>

## C) Fractures

- Inhibited “Boney In-Growth” due to metal ions stunting bone growth.
- Lack of bone growth can cause loosening since this product does not use screws.

 <p><b>POPE, MCGLAMRY, KILPATRICK, MORRISON &amp; NORWOOD, LLP</b> A LIMITED LIABILITY PARTNERSHIP INCLUDING A PROFESSIONAL CORPORATION ATTORNEYS AT LAW</p>	<p><b>Michael L. McGlamry, Esq.</b> mmcglamry@pmkm.com 404-523-7706</p>	<p><b>N. Kirkland Pope, Esq.</b> kirkpope@pmkm.com 404-523-7706</p>
<p><a href="http://www.pmkm.com">www.pmkm.com</a></p>		

## Frequently Asked Questions

### What is the Wright Conserve® Total Acetabular System?

The Conserve Total Acetabular System is a 3 component system comprised of: the femoral stem (which is inserted inside the femur); the femoral head (or ball) that connects to the stem; and then fits inside the acetabulum (cup). A unique characteristic of the Conserve Total Acetabular system is that it is a metal-on-metal device meaning both the femoral ball and acetabular cup portion of the implant are metal.

### What are the Common Problems/Symptoms with the Conserve® Total Acetabular System?

Swelling, component loosening, component misalignment, infections, bone fractures, dislocation, loss of muscle mass, unexplained hip pain, thigh and groin pain, pain when walking or rising from seated position, and clicking sounds. X-rays can also reveal metal debris, which can ultimately lead to inflammation of the surrounding tissue.

### What Should I Do if I Received a Defective Wright Conserve® Total Hip Replacement?

Always consult your doctor or physician regarding health-related issues, but if you or someone you care about received defective joint replacement components, we would like to speak with you right away. **DO NOT SIGN A RELEASE FROM THE SURGEON OR WRIGHT.** It is imperative that you do NOT sign the release sent to you by your physician on behalf of Wright. These releases will allow Wright complete access to your medical records and allow them to obtain possession of the defective implant in the event it is removed.

### What do I need to be doing?

First and foremost, continue your treatment regimen. Additionally, consider keeping a journal. We have found this to be extremely helpful in representing clients and it assists us in personalizing your claims when we have to present them for settlement or trial.

Patients should be aware of the health risks, which include pain, premature loosening or detachment, and metal toxicity. You may have a claim against Wright. The law firm of Pope, McGlamry, Kilpatrick, Morrison & Norwood, LLP has assembled a team of lawyers that have extensive experience representing clients who have suffered after misplacing their trust in negligent companies that produce harmful products.

### If you or someone you know have a Wright Conserve hip replacement system and have suffered pain or any other issues:

- ◆ See your doctor immediately.
- ◆ Do not release any of your confidential medical information to any Wright representatives before speaking to experienced hip replacement lawyers.
- ◆ If you are told that you will need hip revisions surgery, make sure that the removed component parts are preserved. Your counsel should be familiar with this process and working with the proper experts to insure that it is done correctly.

**PMKM&N**

POPE, MCGLAMRY, KILPATRICK, MORRISON & NORWOOD, LLP  
A LIMITED LIABILITY PARTNERSHIP INCLUDING A PROFESSIONAL CORPORATION  
ATTORNEYS AT LAW

Michael L. McGlamry, Esq.  
mmcglamry@pmkm.com  
404-523-7706

N. Kirkland Pope, Esq.  
kirkpope@pmkm.com  
404-523-7706

[www.pmkm.com](http://www.pmkm.com)